



PRO

MECH²KIT

WARNINGS

This product is not intended for use by individuals under the legal smoking age, nonsmokers, or women who are pregnant or breastfeeding. This product is not to be used by individuals who are at risk of or have heart disease, high blood pressure, diabetes, or taking medicine for depression or asthma. Coils must be checked for resistance before they are fired on a device. Periodic re-checks should be made to ensure consistent readings.

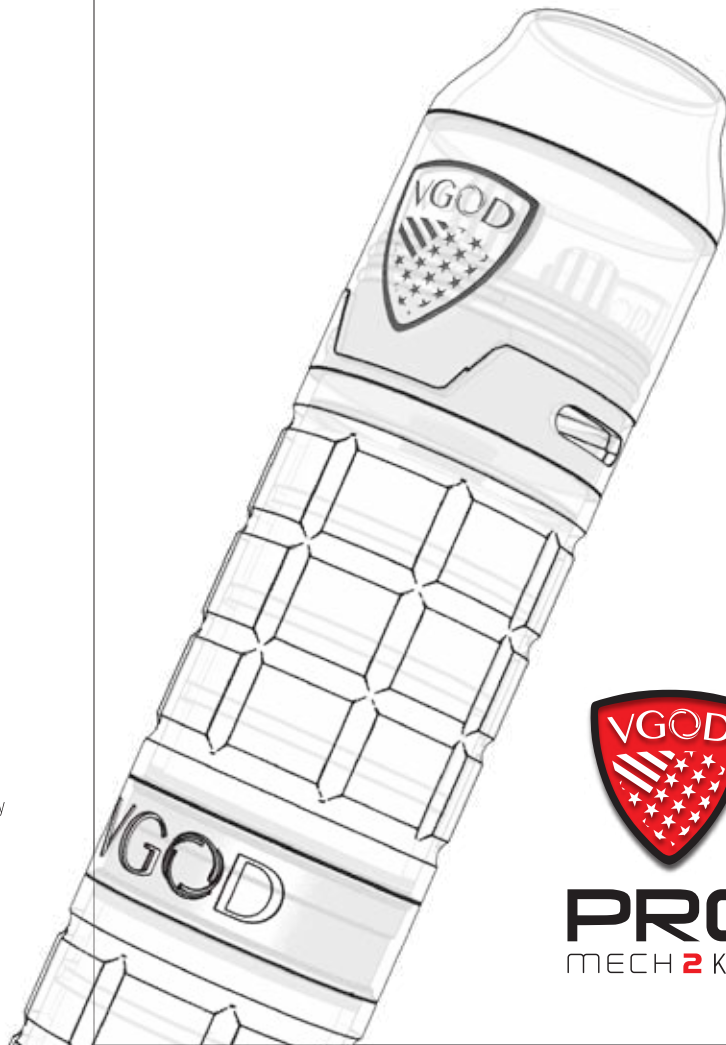


For warranty information, and more information visit www.officialvgod.com.

MADE IN CHINA.



Designed in Torrance
California, USA
officialvgod.com



PRO

MECH²KIT

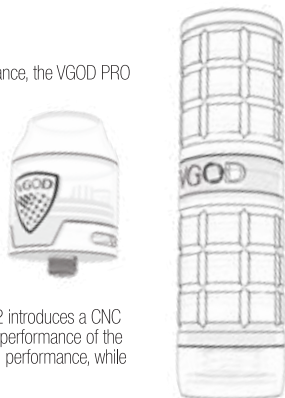
English

Innovation, Comfort, Reliability

Returning with its characteristic style, reliability, and performance, the VGOD PRO Series debuts the PRO Mech 2 Kit.

Elite RDA

The Elite Series RDA is the premier atomizer for dripping. The build deck, with 2mm post holes and 11mm hanging span, is capable of handling the most challenging builds. A 9mm well depth and 2ml capacity allows maximum volume with less dripping.



PRO Mech 2

Boasting unique aesthetics and innovation, the PRO Mech 2 introduces a CNC machined Delrin Comfort Touch Chassis and the consistent performance of the TriCon switch system. The PRO Mech 2 delivers hard hitting performance, while maintaining comfort, and dependability.

Operations

1. Power the device by pressing the Battery Switch button, inwards, located at the bottom of the mod.
2. Cease power by releasing the battery switch button.

Installing Batteries

The VGOD PRO Mech 2 Mechanical Mod features bottom mounted Battery Switch that is removable for access to the battery compartment.

1. To remove the battery, hold the mod upright and rotate the battery switch to the to the left.
2. Place a single 18650 battery, positive side first, to seat just below the 510 hybrid connection.

Negative side of the battery will come in contact with the Battery Switch contact.

3. Install Battery Switch by placing it on the bottom of the mod chassis, threaded side in, and rotate to the right (with the mod upright) until closed. Do not overtighten.

Attaching Atomizer

When attaching the Elite RDA to the PRO Mech2 Mechanical Mod, double check the cleanliness of the threads. NOTE: Be sure that all other atomizers used have a protruding 510 pin below the threads of the atomizer.

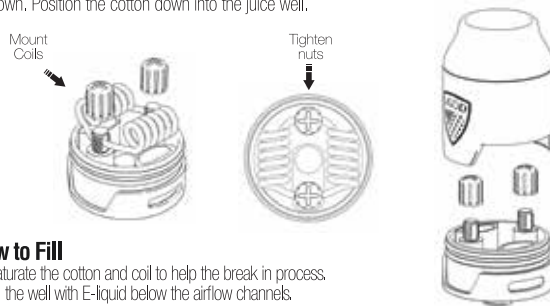
1. Attach your atomizer to the device and be sure not to overtighten the atomizer.
2. Sub-ohm style tank with coils rated under 100 watts should not be used with this device.
3. Press Battery Switch button, begin to vape, and enjoy.

Protection

VGOD is dedicated to the safety of our customers and will design in features that mitigate the probability of error. Features: 1. Plastic lined battery housing. 2. Auto-adjust battery fit

How to install coils

1. Loosen the post nuts to expose the post holes.
2. Mount the coils on a screwdriver or coil wrapping post.
3. Insert first coil leads from one side into the post holes and remove excess lead material from the opposite side.
4. From the opposite side, insert the second coil leads into the post holes above the first coil leads and remove excess lead material from the opposite side.
5. Tighten the post nuts to secure both coils properly in place. Elevation of both coils should be even, and the coils must NOT touch the base. Airflow may be adjusted by lowering or raising the height of the coils.
6. Install cotton into both coils at a length not exceeding the bottom of the RDA when pressed down. Position the cotton down into the juice well.



How to Fill

1. Saturate the cotton and coil to help the break in process.
2. Fill the well with E-liquid below the airflow channels.

Warnings

1. Hybrid 510 atomizer connection. Only use atomizers that have a protruding 510 pin, below the threads of the atomizer.
2. Do not use sub-ohm style tank with coils rated under 100 watts.
3. Keep the device away from high temperature and humidity.
4. Remove the battery from the device when it's not used for a long time.
5. Keep the device away from children, minors, and pets.
6. Ensure the batteries used in the device are at least 35Amp, and the insulation wrap is not damaged.

What's Inside:

- 1 x VGOD PRO Mech 2 Mechanical Mod
- 1 x Carry Case
- 1 x Spare Spring
- 1 x Elite RDA
- 1 x Build, Parallel Fused Claptons
- 1 x Replacement o-rings for the Elite RDA
- 1 x User Manual

