



ELITE RDTA

WARNINGS

This product is not intended for use by individuals under the legal smoking age, nonsmokers, or women who are pregnant or breastfeeding. This product is not to be used by individuals who are at risk of or have heart disease, high blood pressure, diabetes, or taking medicine for depression or asthma. Coils must be checked for resistance before they are fired on a device. Periodic re-checks should be made to ensure consistent readings.

For warranty information, and more information
visit www.officialvgod.com.

 Designed in Torrance
California, USA
officialvgod.com



VGOD®
ELITE RDTA

ABOUT

The VGOD ELITE RDTA – Designed for you, offering the best features, high grade materials, and a look and performance that is truly elite.

Everything you love about a dripper but with the capacity of a tank, the ELITE Series Rebuildable Dripping Tank Atomizer offers the best of both worlds. With its innovative under the hood one way valve fill port, there is no need to remove the cap to refill. Similar to a dripper, just mate the eliquid nozzle to the fill port stem in the center of the drip top and fill. This feature, coupled with a vacuum feed wick system, straight forward build deck, and satisfying tank capacity makes the ELITE Series RDTA the premier Rebuildable Dripping Tank Atomizer.

ATTENTION

- Read the manual before use.
- Only use devices that are compatible with sub-ohm coil resistances.
- Do not drop, throw, or mishandle this product as it may result in broken components.
- Keep this product out of reach of children, minors, pets, and pregnant women.

WHAT'S INSIDE

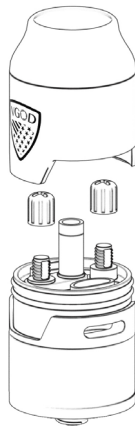
- 1 x VGOD Elite RDTA
- 1 x Extra smoked glass
- 1 x Spare O-rings
- 1 x Multi Tool

SPECIFICATIONS

Top Mount One-way Fill Port
4 ml Tank Capacity
Vacuum Wicking System
Snaggletooth Barrel Stability
Diameter = 24mm
Height = 48mm (not including the 510 connector height)
Hybrid friendly protruding gold plated 510 pin

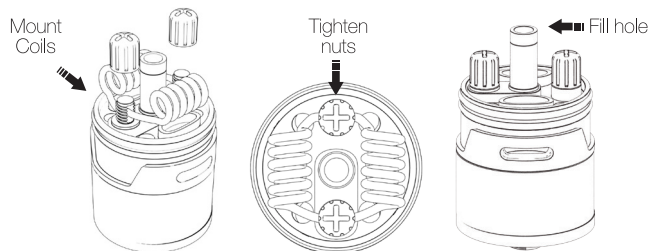
BUILD DECK

Dual posts, 2mm hole
Post screws (can be tightened by finger or with a phillips/flathead screwdriver)
Post hole spacing = 11mm



HOW TO INSTALL COILS

1. Loosen the post nuts to expose the post holes.
2. Mount the coils on a screwdriver or coil wrapping post.
3. Insert first coil leads from one side into the post holes and remove excess lead material from the opposite side.
4. From the opposite side, insert the second coil leads into the post holes above the first coil leads.
5. Tighten the post nuts to secure both coils properly in place. Elevation of both coils should be even, and the coils must NOT touch the base. Airflow may be adjusted by lowering or raising the height of the coils.
6. Install desired cotton into both coils on each side at a length not exceeding the bottom of the RDTA when pressed down.
7. Work the cotton ends into the wicking channels making sure the cotton loosely fills the wicking channels. Be sure saturate the cotton on the build deck to facilitate the wicking process.



HOW TO FILL

1. Locate the fill port stem positioned between the positive and negative posts on the build deck.
2. Mate the E-liquid bottle nozzle flush with the fill port stem and squeeze liquid into the tank.

TANK DISASSEMBLY

1. At the bottom of the device locate the gold plated 510 pin.
2. Using a flat head screwdriver, turn the the gold plated 510 pin (reverse thread) clockwise to remove the pin.
3. Firmly holding the atomizer, rotate the tank base counter clockwise and separate from the device to expose the tank section.