



ELITE RDA

WARNINGS

This product is not intended for use by individuals under the legal smoking age, nonsmokers, or women who are pregnant or breastfeeding. This product is not to be used by individuals who are at risk of or have heart disease, high blood pressure, diabetes, or taking medicine for depression or asthma. Coils must be checked for resistance before they are fired on a device. Periodic re-checks should be made to ensure consistent readings.

For warranty information, and more information
visit www.officialvgod.com.

 Designed in Torrance
California, USA
officialvgod.com



VGOD[®] ELITE RDA

ABOUT

The VGOD ELITE RDA – Designed for you, offering the best features, high grade materials, and a look and performance that is truly elite.

ATTENTION

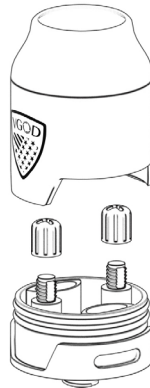
- Read the manual before use.
- Only use devices that are compatible with sub-ohm coil resistances.
- Do not drop, throw, or mishandle this product as it may result in broken components.
- Keep this product out of reach of children, minors, pets, and pregnant women.

WHAT'S INSIDE

1 x VGOD Elite RDA
1 x Spare O-rings
1 x Multi Tool

SPECIFICATIONS

Well depth = 9.25mm
Well capacity = 2ml
Snaggletooth Barrel stability
Diameter = 24mm
Height = 33mm (not including the 510 connector height)
Hybrid friendly protruding gold plated 510 pin



HOW TO FILL

1. Saturate the cotton and coil to help the break in process.
2. Fill the well with E-liquid below the airflow channels.

BUILD DECK

Dual posts, 2mm hole

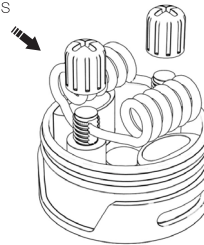
Post screws (can be tightened by finger or with a phillips/flathead screwdriver)

Post hole spacing = 11mm

HOW TO INSTALL COILS

1. Loosen the post nuts to expose the post holes.
2. Mount the coils on a screwdriver or coil wrapping post.
3. Insert first coil leads from one side into the post holes and remove excess lead material from the opposite side.
4. From the opposite side, insert the second coil leads into the post holes above the first coil leads.
5. Tighten the post nuts to secure both coils properly in place. Elevation of both coils should be even, and the coils must NOT touch the base. Airflow may be adjusted by lowering or raising the height of the coils.
6. Install cotton into both coils at a length not exceeding the bottom of the RDA when pressed down. Position the cotton down into the juice well.

Mount
Coils



Tighten
nuts

